

9 bed.

7 bath.

10 car.

1.2 hectare

for
sale.

2745 Christmas Creek Rd, Lamington

Christmas Creek Cabins & Cafe- endless opportunities

Discover an unparalleled retreat just 30 minutes from Beaudesert, nestled in the heart of the Scenic Rim, a destination revered by The Lonely Planet. Immerse yourself in the essence of countryside opulence at this extraordinary property.

Once a beloved school camp, this property has transformed into a privately-run retreat featuring cozy cabins and a charming café. Now, the opportunity is yours to infuse your unique vision and creativity into this versatile space, shaping it into whatever you desire. The canvas is blank, waiting for you to add your own personal touch and create something truly special.

Embrace the thriving glamping and bush camping tourism industry with the exquisite Christmas Creek Café and Cabins and Function Facility. This haven presents boundless opportunities for growth and enhancement, and here's why:

Features:

- Eight cabins, including two family cabins and five with cozy bunk-style accommodations plus a modern standalone cabin featuring a luxurious king bed and bunks.
 - Accommodates up to 64 guests comfortably, catering perfectly to families and group retreats.
 - Enjoy recreational activities with floodlit tennis, basketball, and volleyball courts.
 - The pavilion area and function center cater to guests of all ages.
 - Amenities block equipped with toilets, showers, and laundry facilities.
 - Café with wheelchair-accessible facilities.
 - Manager's cottage
 - Numerous BBQ and fire pits dotted across the grounds for outdoor gatherings.
 - 3 Huge water tanks with UV Filtered water
 - Indulge in culinary delights at the café boasting a commercial kitchen and indoor/outdoor function center.
 - Fully-equipped amenities block offering separate facilities for female and male guests.
 - Convenient access to the pristine waters of Christmas Creek for leisurely activities.

Niki Blenkins

Niki Blenkins – Sales Specialist
The Hunt Property Sisters
RE/MAX Revolution

✉ nblenkins@remax.com.au

☎ 0421 229 033

📷 @huntpropertysisters

RE/MAX Revolution

want a current
market update
of your home?
scan below.



RE/MAX Revolution



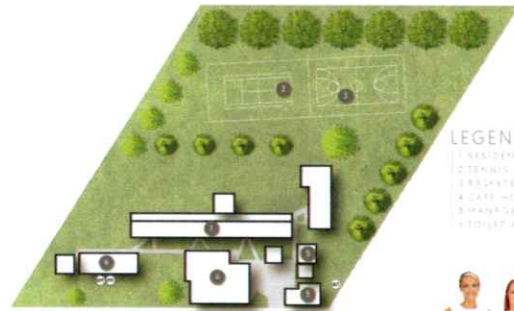
2745 Christmas Creek Rd, Lamington



Floor Plan

RE/MAX Revolution

hunt.
PROPERTY GROUP



LEGEND
 1 RESIDENCE
 2 TENNIS COURT
 3 BASKETBALL COURT
 4 CAFE HOUSE
 5 MANAGER'S OFFICE
 6 TOILET AREA

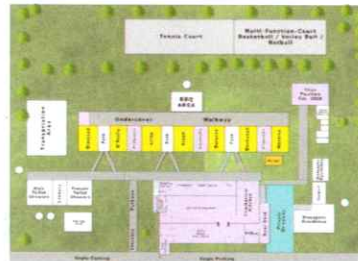


2745 Christmas Creek Road LAMINGTON

All information and representations that are submitted to us are not to be relied upon for any purpose. There are no warranties for marketing purposes only.

RE/MAX Revolution

hunt.
PROPERTY GROUP



2745 Christmas Creek Road LAMINGTON

All information and representations that are submitted to us are not to be relied upon for any purpose. There are no warranties for marketing purposes only.